

bic CARPETS

THE CATALOGUE



bic. CARPETS

 40 years of 
STONE
 BIC introduces a new
 colour: **Alpin**
 EST.1956 

CONTENT

ABOUT..... 7

LUXURY COLLECTION..... 10

Allure.....11

Atrar.....15

Bamboo.....17

Blitz.....18

Chelha.....20

Dusk.....21

Eos.....23

Galaxy.....25

Impulse.....30

Isul.....33

Led.....34

Nature.....35

Pavé Berberi.....36

Pavé Chevron.....39

Pavé de Luxe.....41

Shadow.....43

Siwa.....47

Stone.....50

Superstyle.....52

Twilight.....54

CONTRACT COLLECTION..... 56

Chic.....57

Elite.....58

Move.....60

New Artisan.....62

Pixel.....64

Posh.....67

HAND TUFTED COLLECTION..... 68

Aqua.....70

Brick.....72

Doppio.....74

Grid.....76

Logs.....78

Mecca.....79

Medina.....81

Prince.....82

Queen.....85

Royal.....88

Trinity.....91

Versa.....98

FINISHING..... 104



ABOUT

B.I.C.-Carpets is **recognised internationally** for creating high quality and beautiful bespoke carpets in the world of custom Wilton weaving. Since its foundation in **1956**, B.I.C. carpets has been committed to **providing a tailored, individual service**, offering quality, flexibility and value for its customers around the globe.

Based in Belgium, we serve our clients worldwide through a network of agents, importers and selected dealers. B.I.C.-carpets has been **rewarded with several prizes** for its outstanding creativity, innovation and know how.

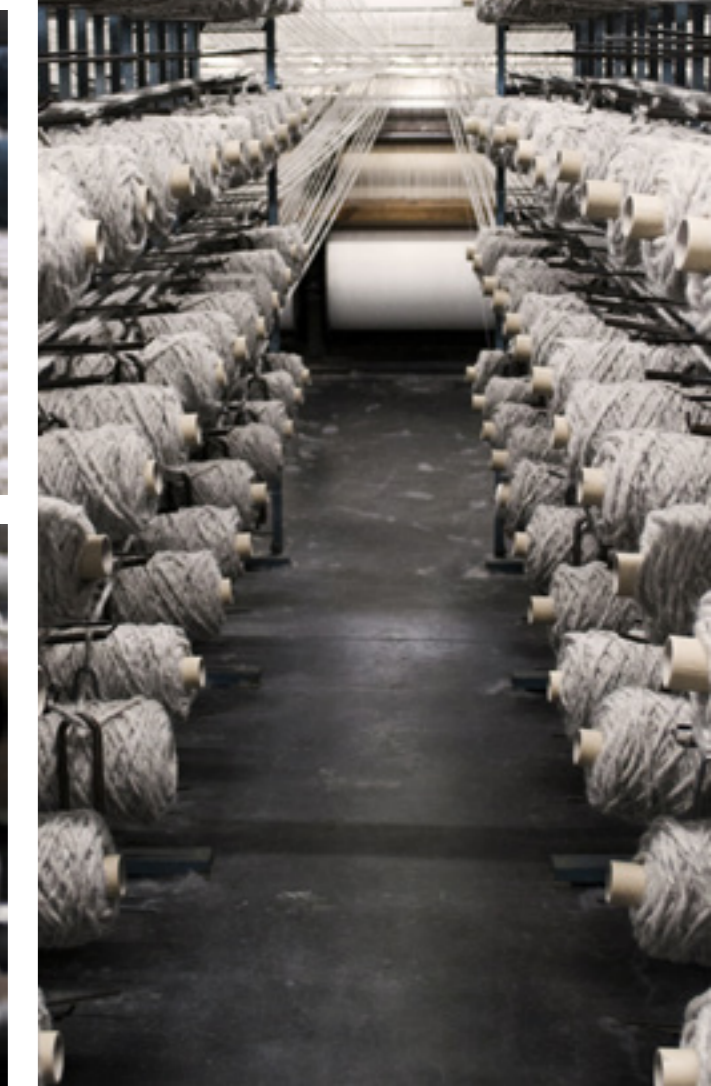
MADE IN BELGIUM

Nothing exceeds the superior quality of traditional, carefully crafted carpets. **Years of craftsmanship** led to our choices of natural and sustainable materials to provide **a product that can last up to a lifetime.**

Our **continuous search** to be innovative is what makes us who we are today, offering you versatile and iconic carpets.



The desire to be innovative



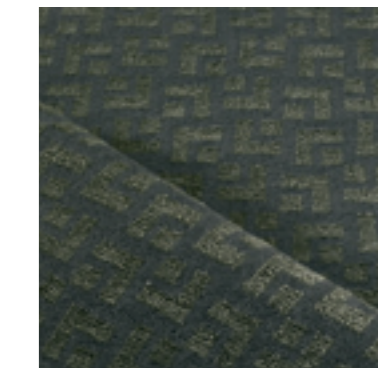


LUXURY COLLECTION

Allure dessin carré



3560 beige



3580 grey

sizes

available in all standard sizes, special sizes & broadloom

wilton woven
cutpile

pile composition
43% pure wool - 57% viscose

repeat
W: 8.75cm - H: 8.75cm

pile weight
ca. 2580 g/m²

total weight
ca. 3350 g/m²

pile height
ca. 12 mm

total height
ca. 15 mm

backing
PES/cotton, jute & latex

knots
ca. 102400/m²

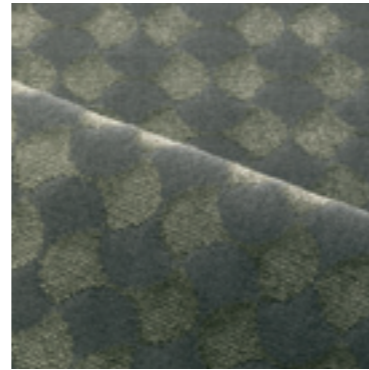
width
4 m

use
please contact our sales office for advice

Allure
dessin drops



3460 beige



3480 grey

sizes

available in all standard sizes, special sizes & broadloom

wilton woven
cutpile

pile composition
43% pure wool - 57% viscose

repeat
W: 5.625cm – H: 11.25cm

pile weight
ca. 2580 g/m²

total weight
ca. 3350 g/m²

pile height

ca. 10 mm

total height

ca. 12 mm

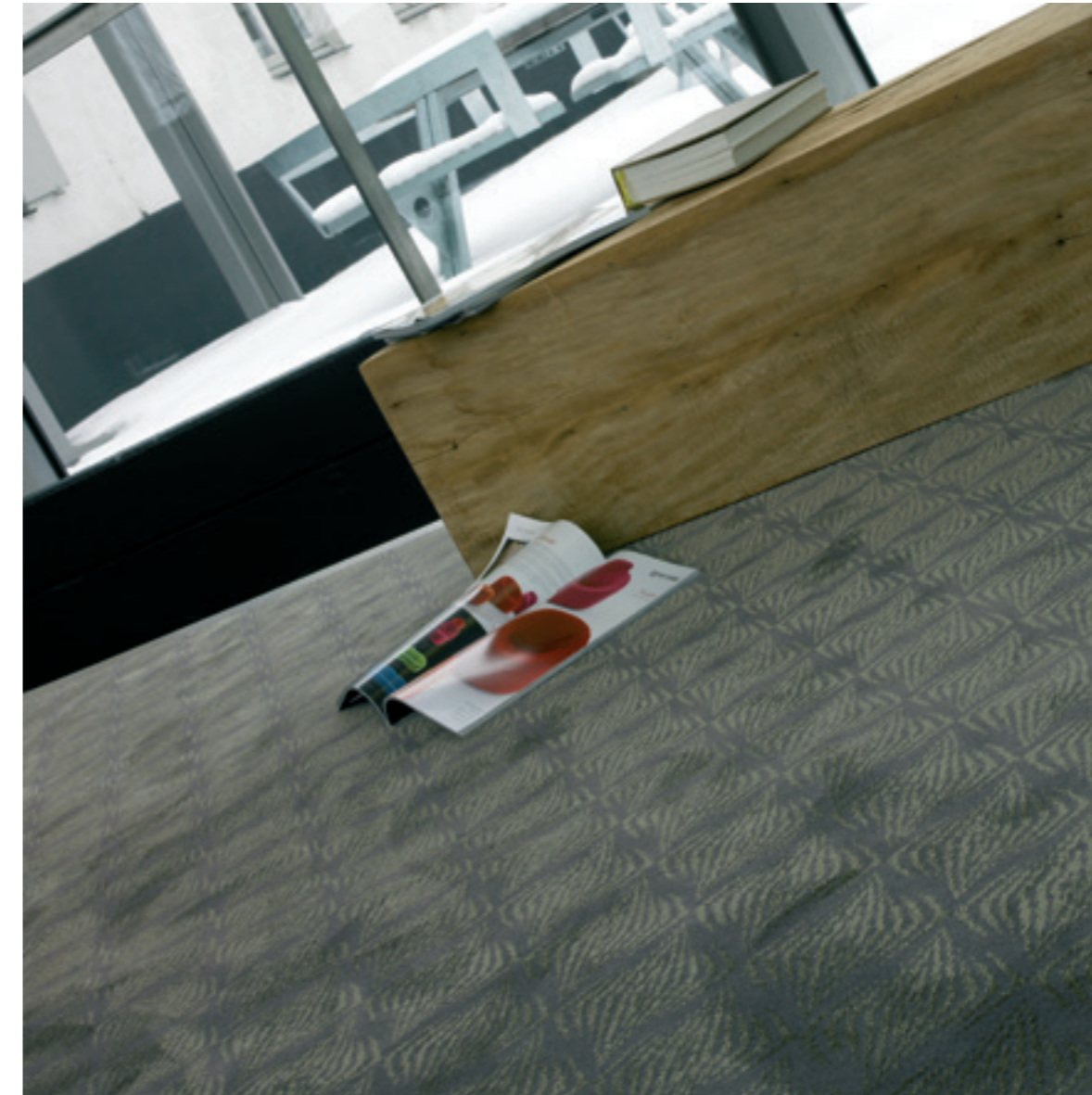
backing
PES/cotton, jute & latex

knots
ca. 102400/m²

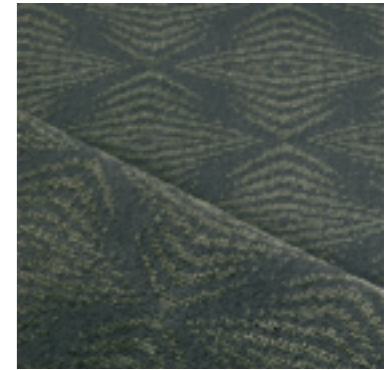
width
4 m

use
please contact our sales office for advice

Allure
dessin stars



3660 beige



3680 grey

sizes

available in all standard sizes, special sizes & broadloom

wilton woven
cutpile

pile composition
43% pure wool - 57% viscose

repeat
W: 10cm - H: 15cm

pile weight
ca. 2580 g/m²

total weight
ca. 3350 g/m²

pile height

ca. 10 mm

total height

ca. 12 mm

backing
PES/cotton, jute & latex

knots
ca. 102400/m²

width
4 m

use
please contact our sales office for advice

Atrar



sizes
broadloom & rugs

wilton woven
looppile

pile composition
100 % pure wool

pile weight
ca. 2300 g/m²

total weight
ca. 3000 g/m²

pile height
ca. 7 mm

total height
ca. 9 mm

backing
PES/cotton, jute & latex

width
4 m

use
please contact our sales office
for advice





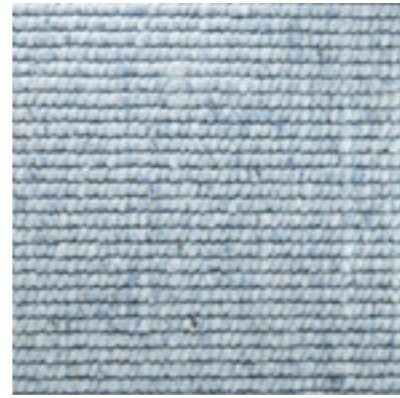
5236 coldgrey



5207 sandy brown



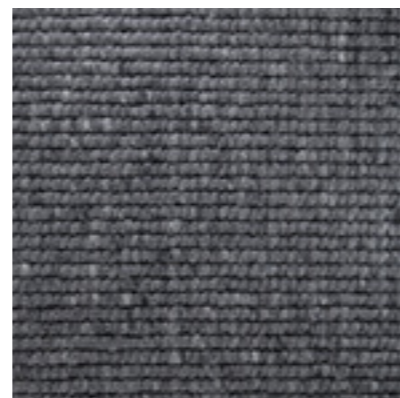
5208 new beige



5209 polar blue



5212 terracotta



5214 ebony

Bamboo



160 white



sizes
broadloom & rugs

wilton woven
looppile - ISO 2424

pile composition
100% pure wool

pile weight
ca. 2000 g/m² - ISO 8543

total weight
ca. 2750 g/m² - ISO 8543

pile height
ca. 9 mm - ISO 1766

total height
ca. 11 mm - ISO 1765

backing
PES/cotton, jute & latex -
ISO 2424

knots
ca. 11200/ m² - ISO 1763

width
4 m

use
please contact our sales
office for advice | reaction
to fire - EN 13501-1 (2002)

Blitz



sizes
available in all standard sizes,
special sizes & broadloom

wilton woven
cutpile & looppile

pile composition
micro-tech PES

pile weight
ca. 3050 g/m²

total weight
ca. 3800 g/m²

pile height
ca. 15 mm

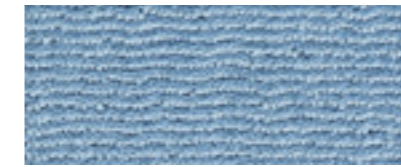
total height
ca. 17 mm

backing
PES/cotton & latex

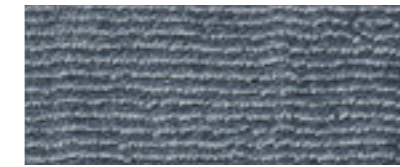
knots
ca.105600/m²

width
4 m

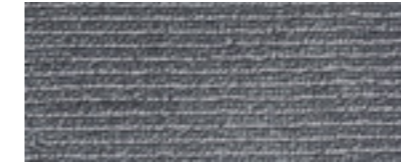
use
residential and light commercial use



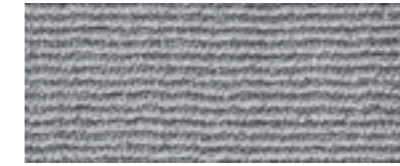
3850 m.-blue



3840 aqua



3910 anthracite



3820 light grey



3810 silver



3890 champagne



3880 ivoire



3860 brown copper



3870 ocre



3900 red



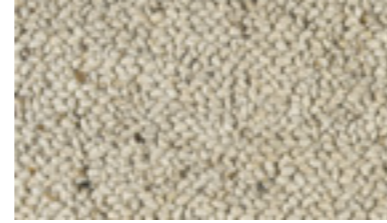
3830 taupe



Chelha



1404 white



1405 sand



1406 grey

sizes
available in all standard
sizes, special sizes
& broadloom

wilton woven
looppile

pile composition
100% pure wool

pile weight
ca. 2500 g/m²

total weight
ca. 3200 g/m²

pile height
ca. 15 mm

total height
ca. 17 mm

backing
PES/cotton, jute & latex

knots
ca. 16200/m²

width
4 m

use
please contact our sales
office for advice

Dusk



3260 beige



3280 grey



3238 slate

sizes
available in all standard
sizes, special sizes
& broadloom

wilton woven
cutpile

pile composition
32 % pure wool
68 % viscose

pile weight
ca. 3200 g/m²

total weight
ca. 3900 g/m²

pile height
ca. 12 mm

total height
ca. 14 mm

backing
PES/cotton, jute & latex

knots
ca. 102400/m²

width
4 m

use
please contact our sales
office for advice



Eos

Eos



1481 snow



1460 sand

sizes

available in all standard sizes, special sizes & broadloom

wilton woven

cutpile & looppile

pile composition

60 % pure wool 40 % cotton

pile weight

ca. 2500 g/m²

total weight

ca. 3100 g/m²

pile height

ca. 18 mm

total height

ca. 20 mm

backing

PES/cotton, jute & latex

knots

ca. 32400/m²

width

4 m

use

please contact our sales office for advice

Galaxy



sizes

available in all standard sizes,
special sizes & broadloom

wilton woven
cutpile

pile composition
micro-tech PES

pile weight
ca. 3050 g/m²

total weight

ca. 3800 g/m²

pile height
ca. 15 mm

total height
ca. 17 mm

backing
PES/cotton & latex

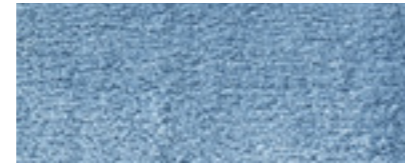
knots

ca.105600/m²

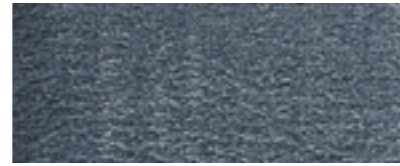
width
4 m

use

residential and light commercial use



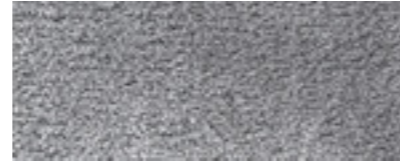
3850 m.-blue



3840 aqua



3910 anthracite



3820 light grey



3810 silver



3890 champagne



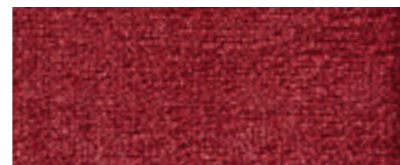
3880 ivoire



3860 brown copper



3870 ocre



3900 red



3830 taupe





Galaxy



Impulse

Impulse



sizes
available in all standard sizes,
special sizes & broadloom

wilton woven
looppile & cutpile

pile composition
61% pure wool - 39% micro PES

pile weight
ca. 3275 g/m²

total weight
ca. 3920 g/m²

pile height
ca. 15 mm

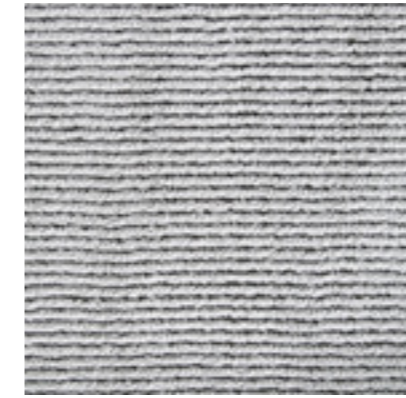
total height
ca. 18 mm

backing
PES/cotton, jute & latex

knots
ca.102400/m²

width
4 m

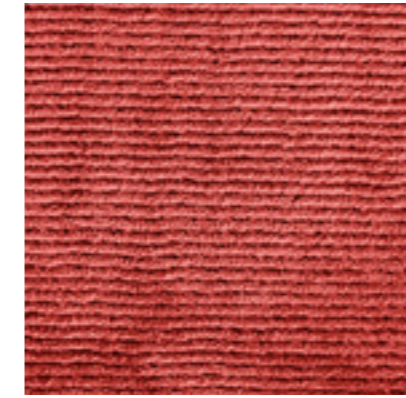
use
please contact our sales office
for advice



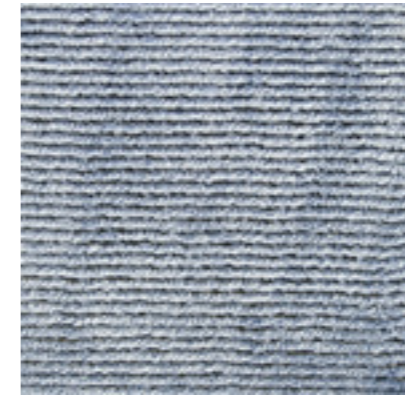
5960 silver



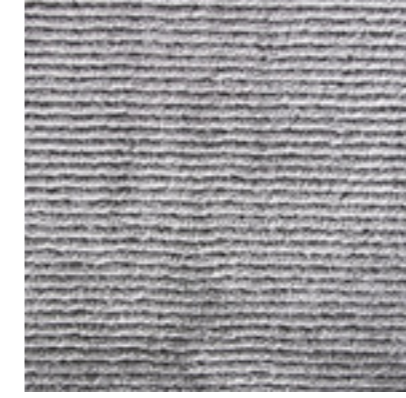
5950 sand



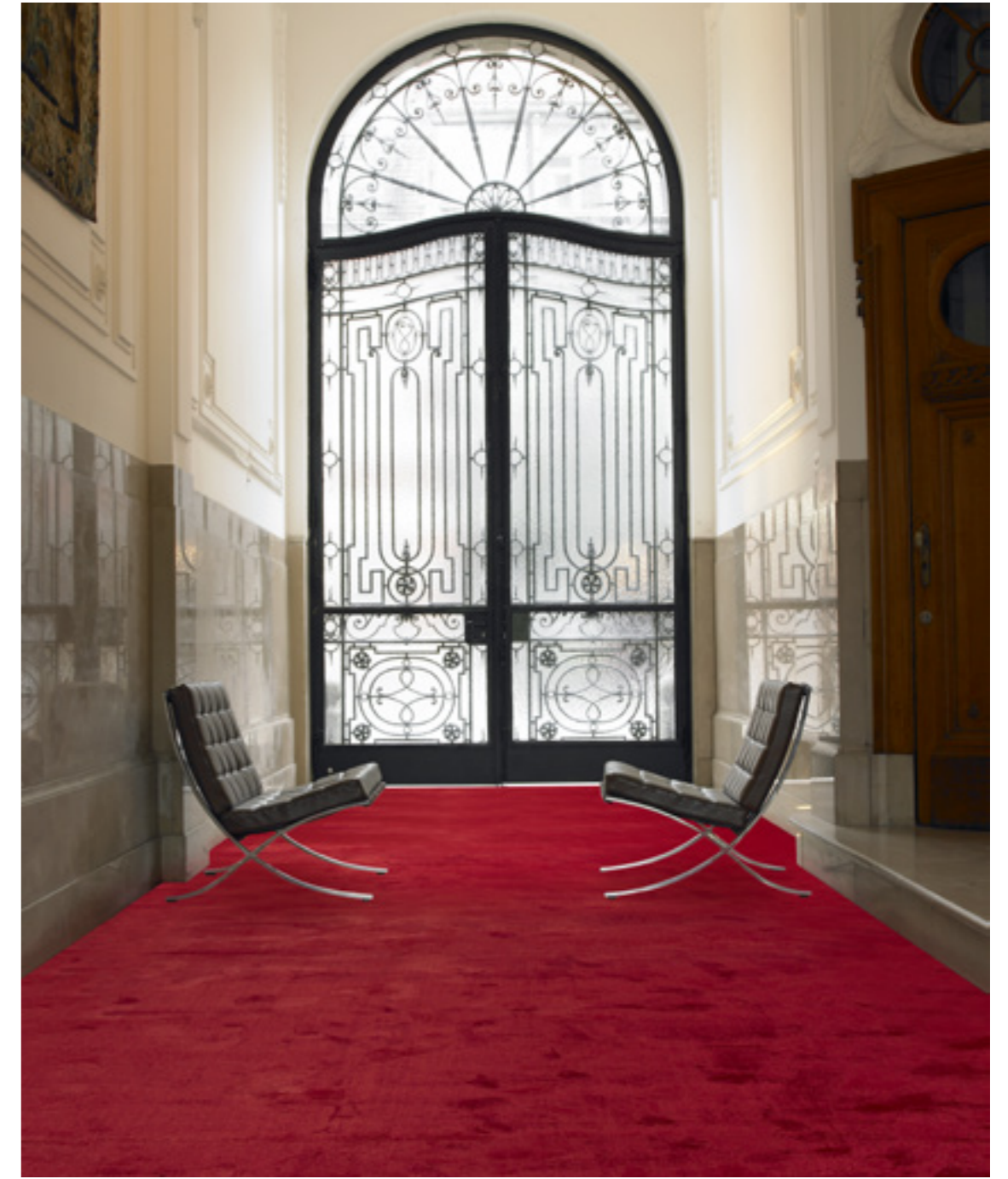
5908 vermell



5951 blau



5980 gris



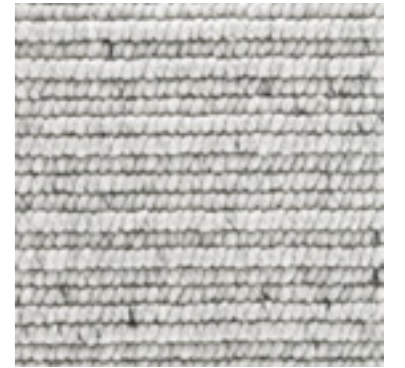
Isul



Isul



5107 sandybrown



5136 coldgrey

sizes
broadloom & rugs

wilton woven
looppile

pile composition
100 % pure wool

pile weight
ca. 2520 g/m²

total weight
ca. 3500 g/m²

pile height
ca. 11 mm

total height
ca. 15 mm

backing
PES/cotton, jute & latex

knots
ca. 32400/m²

width
4 m

use
please contact our sales office for advice

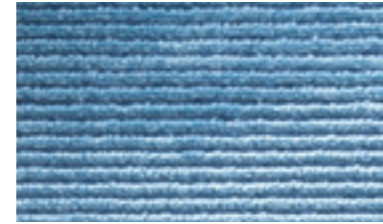
Led



4360 beige



4338 slate



4335 powderblue



4380 grey

sizes
standard sizes, special sizes
& broadloom

wilton woven
cutpile

pile composition
43 % pure wool
57 % viscose

pile weight
ca. 2200 g/m²

total weight
ca. 2830 g/m²

pile height
ca. 6 mm

total height
ca. 8 mm

backing
PES/cotton, jute & latex

knots
ca. 102400/m²

width
4 m

use
please contact our sales
office for advice

Nature



150 white



sizes
broadloom & rugs

wilton woven
looppile - ISO 2424

pile composition
100% pure wool

pile weight
ca. 1900g/m² - ISO 8543

total weight
ca. 2630 g/m² - ISO 8543

pile height
ca. 9 mm - ISO 1766

total height
ca. 11 mm - ISO 1765

backing
PES/cotton, jute & latex -
ISO 2424

knots
ca. 19600/m² - ISO 1763

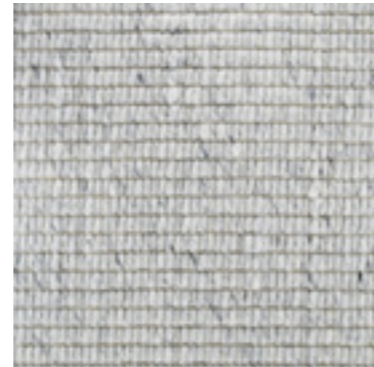
width
4 m

use
class 32 commercial
general | reaction to fire -
EN 13501-1 (2002)

Pavé Berberi



5807 sandybrown



5836 coldgrey

sizes
broadloom & rugs

wilton woven
looppile

pile composition
100 % pure wool

pile weight
ca. 1250 g/m²

total weight
ca. 2300 g/m²

pile height
ca. 5 mm

total height
ca. 8 mm

backing
PES/cotton, jute & latex

width
4 m

use
please contact our sales
office for advice



Pavé Chevron



sizes
broadloom & rugs

wilton woven
looppile

pile composition
100 % pure wool

pile weight
ca. 1250 g/m²

total weight
ca. 2300 g/m²

pile height
ca. 5 mm

total height
ca. 8 mm

backing
PES/cotton, jute & latex

width
4 m

use
please contact our sales office
for advice



5208 new beige



5209 polar blue

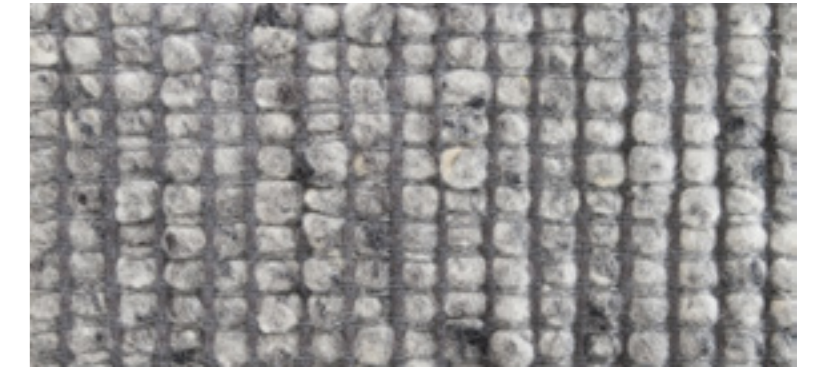


5212 terracotta



5214 ebony

Pavé de Luxe



5797 charcoal

sizes
broadloom & rugs

wilton woven
looppile

pile composition
100 % pure wool

pile weight
ca. 1500 g/m²

total weight
ca. 2300 g/m²

pile height
ca. 15 mm

total height
ca. 15 mm

backing
PES/cotton, jute & latex

width
3,7 m

use
please contact our sales
office for advice



Shadow

Shadow



sizes

available in all standard sizes,
special sizes & broadloom

wilton woven

cutpile & looppile

pile composition

52 % pure wool - 48 % PES/viscose

pile weight

ca. 3300 g/m²

total weight

ca. 3950 g/m²

pile height

ca. 18 mm

total height

ca. 19 mm

backing

PES/cotton & latex

knots

ca. 32400/m²

width

4 m

use

please contact our sales office
for advice



1483 ivory black



3037 warm grey



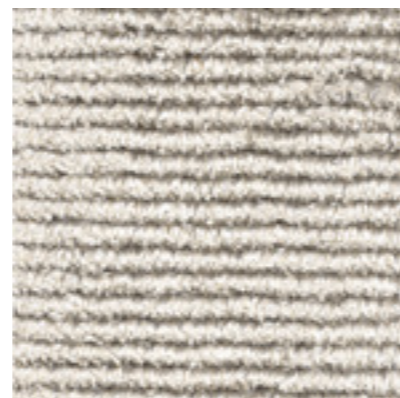
3004 smoked grey



3002 silver linen



3024 seashell



3023 ghostsmoke

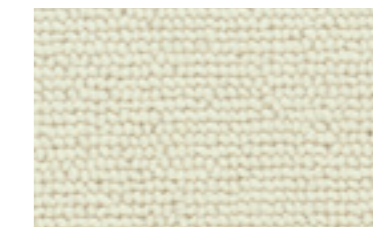


Shadow



Shadow

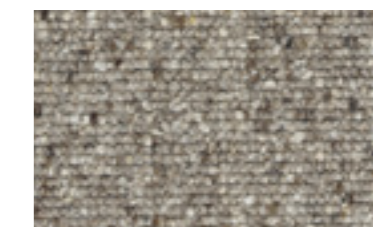
Siwa



1404 white



1405 sand



1406 grey



sizes
broadloom & rugs

wilton woven
looppile - ISO 2424

pile composition
100 % pure wool
directive 96/73 - 96/74

pile weight
ca. 2200 g/m² - ISO 8543

total weight
ca. 2950 g/m² - ISO 8543

pile height
ca. 10 mm - ISO 1766

total height
ca. 11,5 mm - ISO 1765

backing
PES/cotton, jute & latex
ISO 2424

knots
ca. 32400/m² - ISO 1763

width
4 m - ISO 3018

use
please contact our sales
office for advice



Stone



sizes

available in all standard sizes,
special sizes & broadloom

wilton woven

looppile

pile composition

100% pure wool

pile weight

ca. 4950 g/m²

total weight

ca. 6100 g/m²

pile height

ca. 30 mm

total height

ca. 33 mm

backing

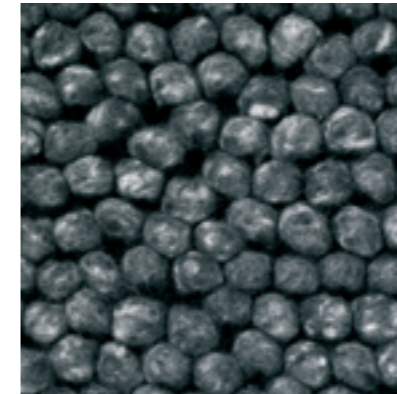
PES/cotton & latex

width

4 m

use

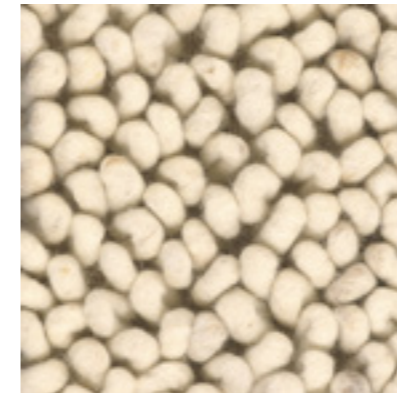
please contact our sales office
for advice



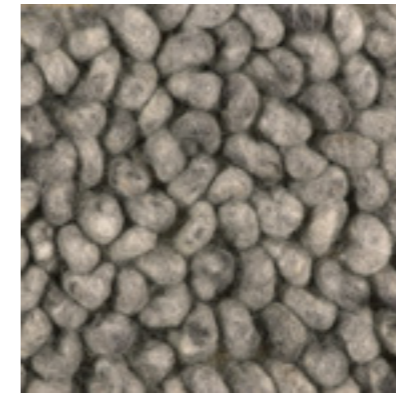
2908 marble



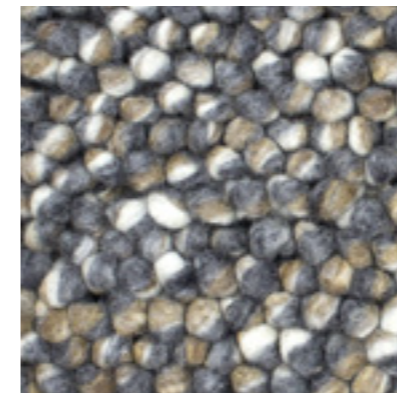
292 grege



290 ivoire



297 charcoal



alpin



Superstyle



150 white



sizes
broadloom & rugs

wilton woven
looppile - ISO 2424

pile composition
100% pure wool

pile weight
ca. 1900g/m² - ISO 8543

total weight
ca. 2630 g/m² - ISO 8543

pile height
ca. 9 mm - ISO 1766

total height
ca. 11 mm - ISO 1765

backing
PES/cotton, jute & latex -
ISO 2424

knots
ca. 9600/m² - ISO 1763

width
4 m

use
class 32 commercial
general | reaction to fire -
EN 13501-1 (2002)



Twilight



sizes

available in all standard sizes, special sizes & broadloom

wilton woven

cutpile

pile composition

micro-tech PES

pile weight

ca. 3050 g/m²

total weight

ca. 3800 g/m²

pile height

ca. 15 mm

total height

ca. 17 mm

backing

PES/cotton & latex

knots

ca.105600/m²

width

4 m

use

residential and light commercial use



chrome



golden brown



mineral



storm grey





CONTRACT COLLECTION

Chic



7883 craie



7887 biscuit



7824 taupe



sizes
broadloom & rugs

wilton woven
cutpile & looppile - ISO 2424

pile composition
100 % pure wool
directive 96/73 - 96/74

pile weight
ca. 1200 g/m² - ISO 8543

total weight
ca. 2100 g/m² - ISO 8543

pile height
ca. 7 mm - ISO 1766

total height
ca. 8 mm - ISO 1765

backing
PES/cotton, jute & latex
ISO 2424

knots
ca. 102400/m² - ISO 1763

width
4,5 m
ISO 3018

use
class 32 commercial
general

Elite



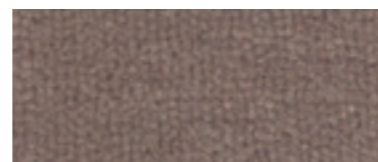
7556 off white



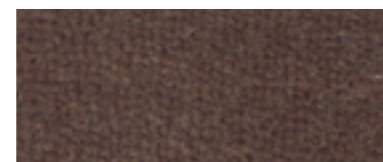
7583 craie



7587 biscuit



7569 clay



7524 taupe



7513 nero



sizes

broadloom & rugs

wilton woven

cutpile - ISO 2424

pile composition

100 % pure wool
directive 96/73 - 96/74

pile weight

ca. 1350 g/m² - ISO 8543

total weight

ca. 2200 g/m² - ISO 8543

pile height

ca. 7 mm - ISO 1766

total height

ca. 9 mm - ISO 1765

backing

PES/cotton, jute & latex
ISO 2424

knots

ca. 102400/m² - ISO 1763

width

4,5 m
ISO 3018

use

class 32 commercial
general



Move



sizes
available in broadloom and rugs

wilton woven
looppile - ISO 2424

pile composition
100 % pure wool enriched with Kasjmere
directive 96/73 - 96/74

pile weight
ca. 950 g/m² - ISO 8543

total weight
ca. 2200 g/m² - ISO 8543

pile height
ca. 3 mm - ISO 1766

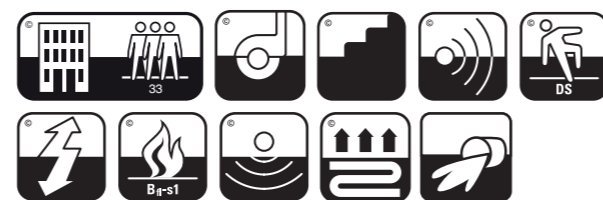
total height
ca. 5 mm - ISO 1765

backing
action back - ISO 2424

knots
ca. 43200/m² - ISO 1763

width
4 m - ISO 3018

use
class 33 commercial heavy - castor chair
continuous use: EN 1307, EN 1470, EN 13297,
EN 985, EN 425, pr EN 15114
stairs continuous use: EN 1307, EN 1470, EN13297,
EN 1963, pr EN 15114, EN 14215
reaction to fire



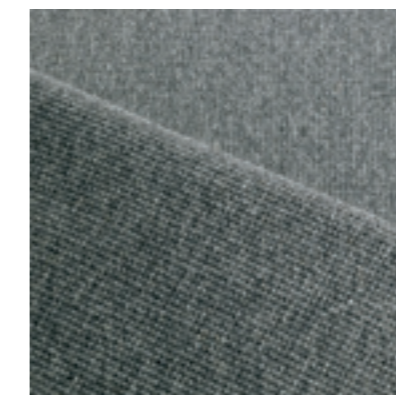
3778 cornsilk



3777 cashew



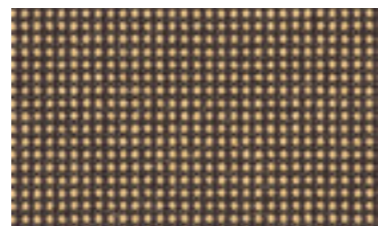
3779 mushroom



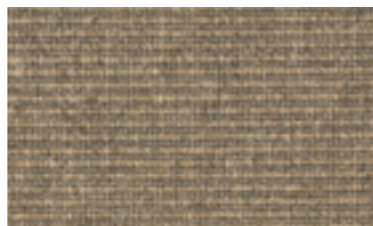
3796 granite



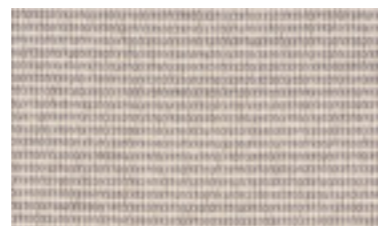
New Artisan



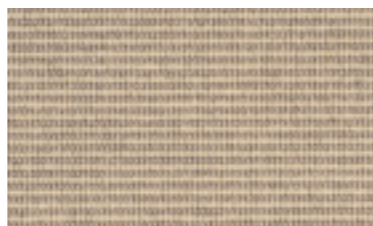
812 corn black



816 grege



1355 cream



1356 golden beige



sizes

broadloom & rugs

wilton woven

looppile - ISO 2424

pile composition

100 % pure wool
directive 96/73 - 96/74

pile weight

ca. 650 g/m² - ISO 8543

total weight

ca. 2150 g/m² - ISO 8543

pile height

ca. 3 mm - ISO 1766

total height

ca. 4 mm - ISO 1765

backing

PES/cotton, jute & latex
ISO 2424

knots

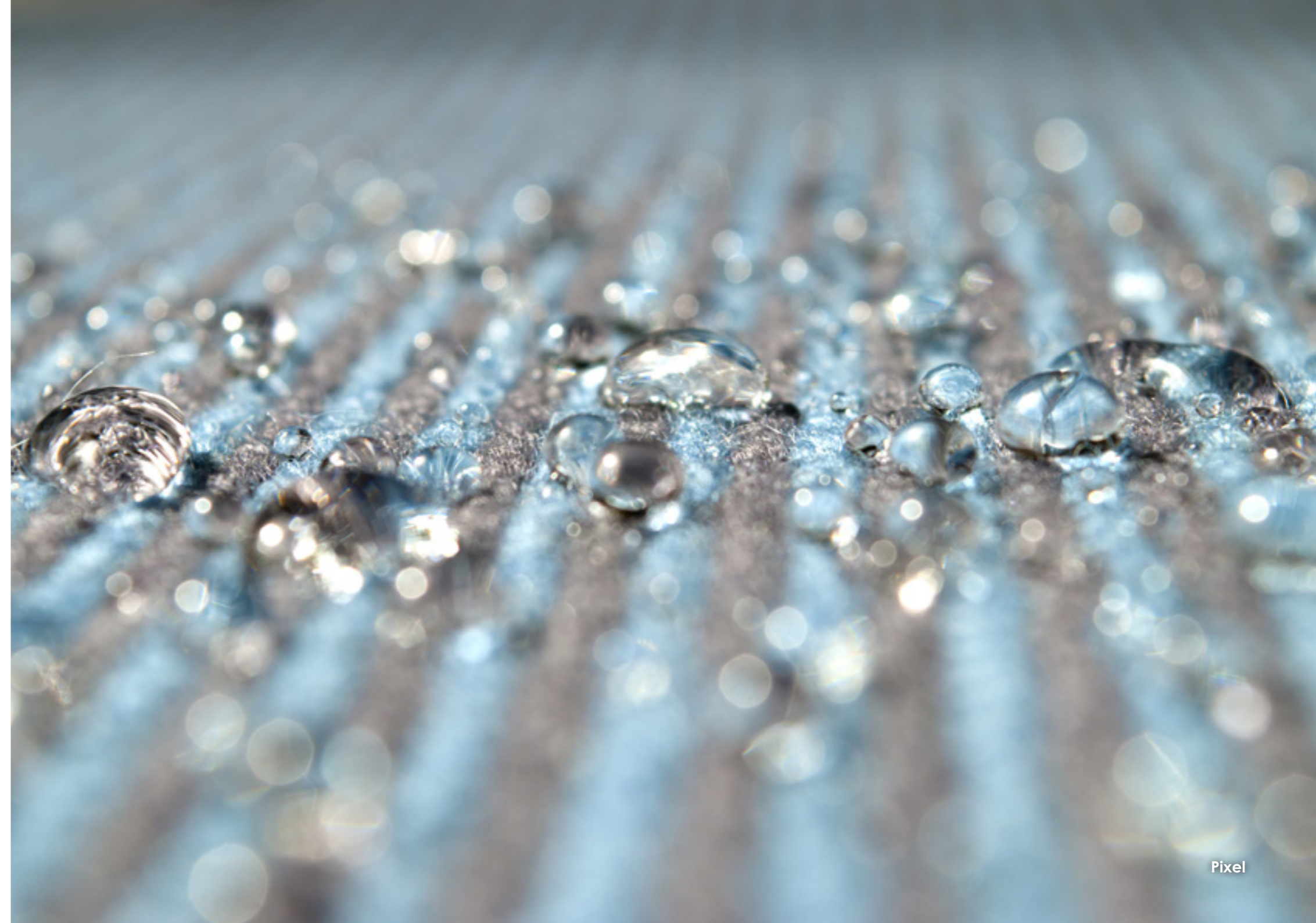
ca. 48000/m² - ISO 1763

width

4 m - ISO 3018

use

please contact our sales
office for advice
slip resistance
reaction to fire



Pixel



sizes
available in broadloom and rugs

wilton woven
looppile - ISO 2424

pile composition
100 % pure wool directive 96/73 - 96/74

pile weight
ca. 950 g/m² - ISO 8543

total weight
ca. 2100 g/m² - ISO 8543

pile height
ca. 3 mm - ISO 1766

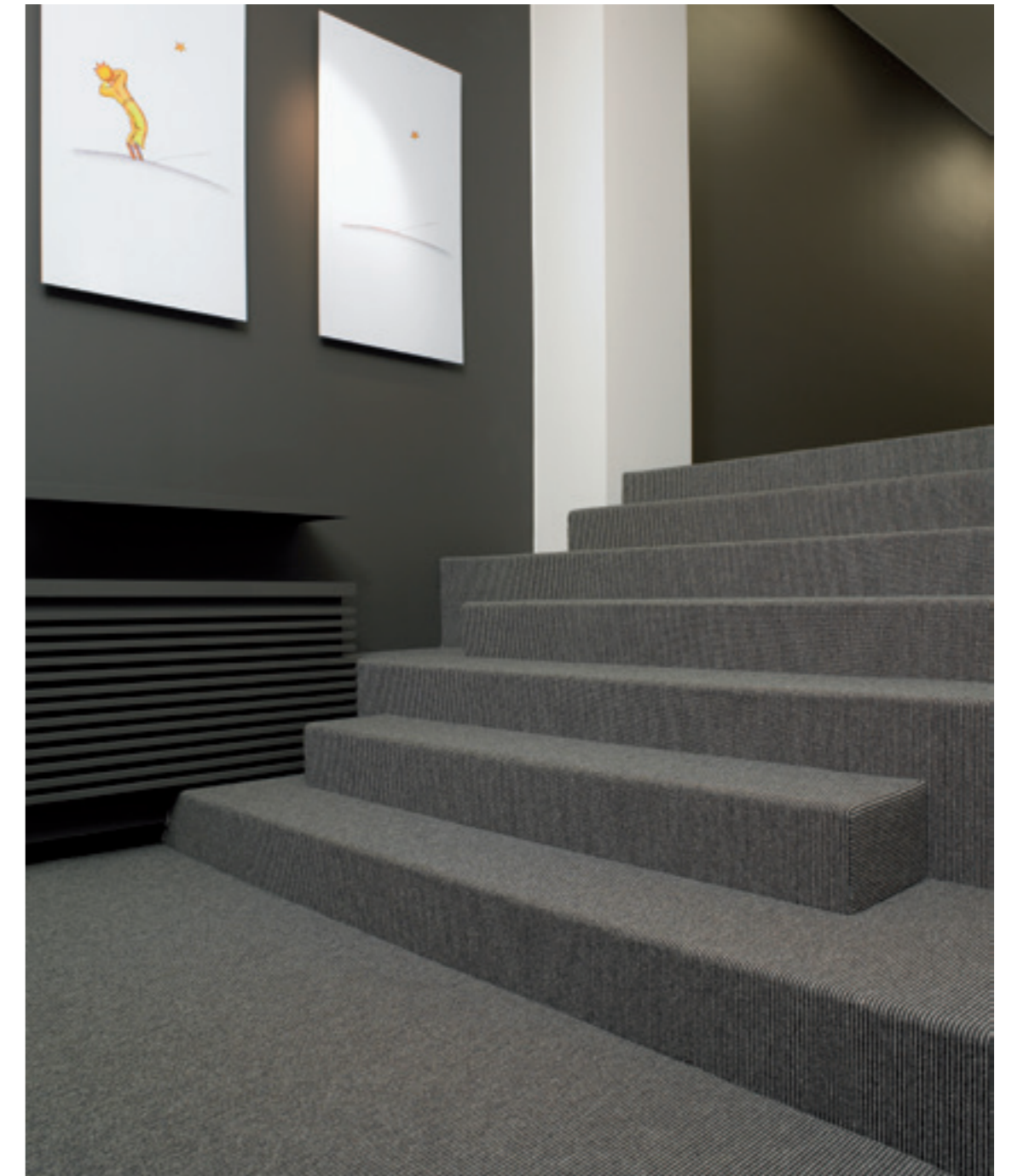
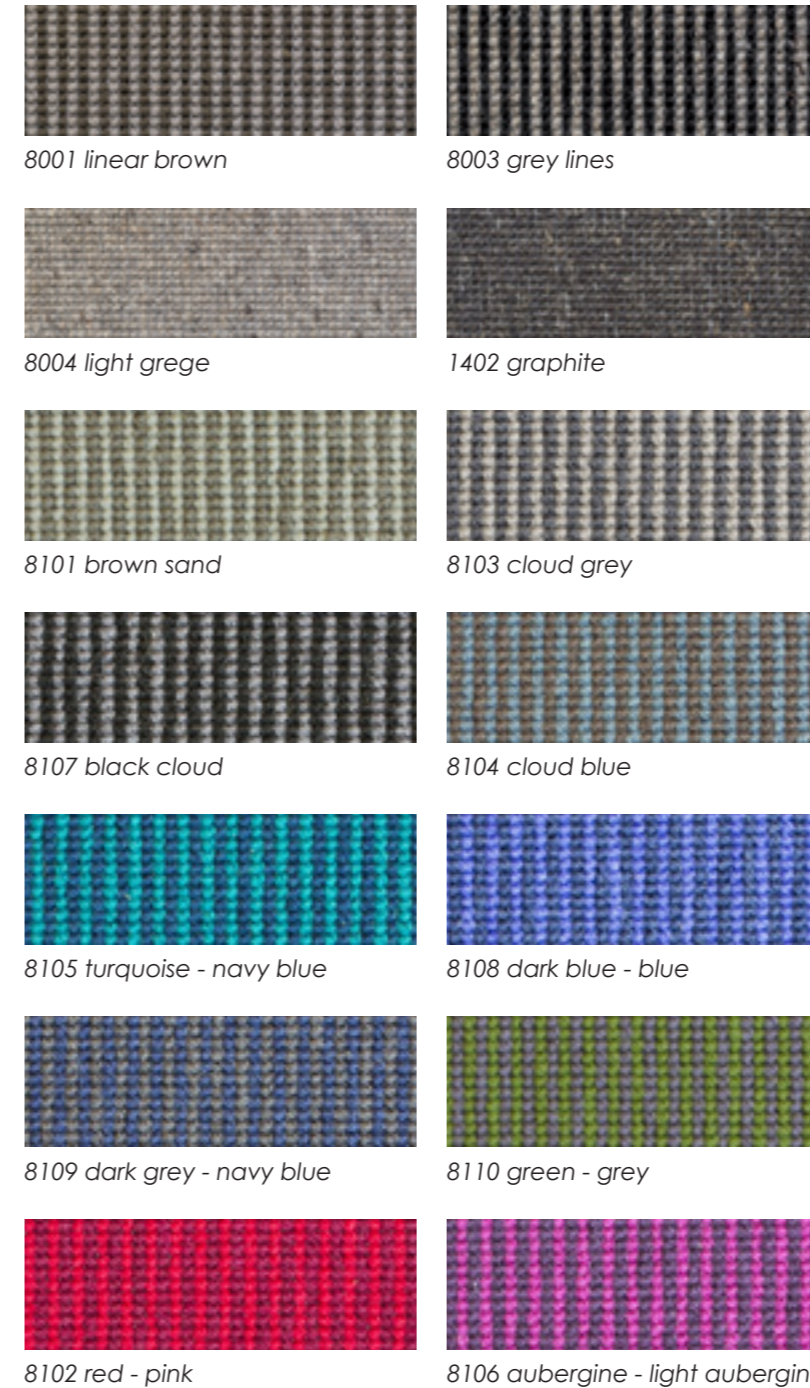
total height
ca. 4 mm - ISO 1765

backing
PES/PP, action back - ISO 2424

knots
ca. 48000/m² - ISO 1763

width
2 m or 4 m - ISO 3018

use
class 33 commercial heavy - castor chair
continuous use: EN 1307, EN 1470, EN 13297,
EN 985, EN 425, pr EN 15114
stairs continuous use: EN 1307, EN 1470, EN13297,
EN 1963, pr EN 15114, EN 14215
reaction to fire





Pixel

Posh



7757 off white



7769 clay



7713 nero



sizes
broadloom & rugs

wilton woven
cutpile & looppile - ISO 2424

pile composition
100 % pure wool
directive 96/73 - 96/74

pile weight
ca. 1350 g/m² - ISO 8543

total weight
ca. 2200 g/m² - ISO 8543

pile height
ca. 7 mm - ISO 1766

total height
ca. 9 mm - ISO 1765

backing
PES/cotton, jute & latex
ISO 2424

knots
ca. 102400/m² - ISO 1763

width
4,5 m
ISO 3018

use
class 32 commercial
general



HAND TUFTED COLLECTION

MADE IN PORTUGAL

A modern approach to the tapestry arts, hand-tufting results in **a high quality rug of excellent appearance and touch.** Versatile on design and finishing choices, it is often the solution for interior designers and decorators to embellish the floor of their projects. Choose your design, pattern, motif, style, composition, shape, colour, feeling and **we will make your carpet to measure.**



[You have the idea, we make the carpet]

Aqua



The Aqua 100% linnen carpet is pure and elegant. Luxurious and exclusive. Extremely strong but rigid material. The wavy surface gives a wild look.

The sheen on our linen yarns and the various different shades gives the rugs an ever changing and marbled impression.

- sizes**
available as a finished rug and wall to wall carpet
max. size of handtuft carpet without a seam: 5x10 m
- pile composition**
100 % linen
- pile weight**
ca. 5500 g/m²
- pile height**
ca. 20 mm (12 mm pile height available on request)
- width**
max. 5 m
- use**
please contact our sales office for advice



Brick



Build your own home-carpet with Brick. Choose among the 51 outstanding colours to obtain a personalized and unique rug.

sizes

available as a finished rug and wall to wall carpet
max. size of handtuft carpet without a seam: 5x10 m

pile composition

100 % lyocell

pile weight

ca. 4000 g/m²

pile height

ca. 12 mm

width

max. 5 m

use

please contact our sales office for advice



Doppio



With its class and elegance, Doppio fits in many contemporary interiors.

sizes

available as a finished rug and wall to wall carpet
max. size of handtuft carpet without a seam: 5x10 m

pile composition

100 % wool

pile weight

ca. 4000 g/m²

pile height

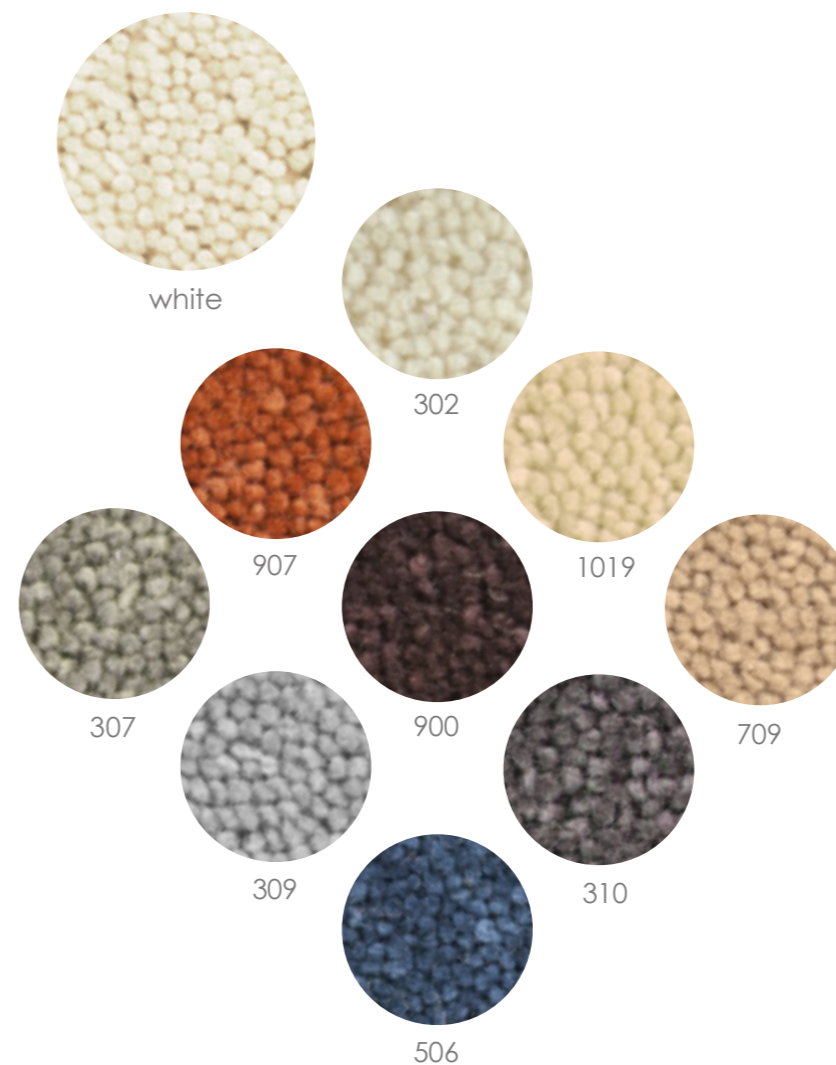
ca. 14 mm

width

max. 5 m

use

please contact our sales office for advice



Grid



With a subtle mix of wool and lyocell, this hand tufted carpet shines like a diamond. Pick one out of the six available combinations and enjoy the look and feel of this astonishing rug.

sizes

available as a finished rug and wall to wall carpet
max. size of handtuft carpet without a seam: 5x10 m

pile composition

50% lyocell - 50% wool

pile weight

ca. 5000 g/m²

pile height

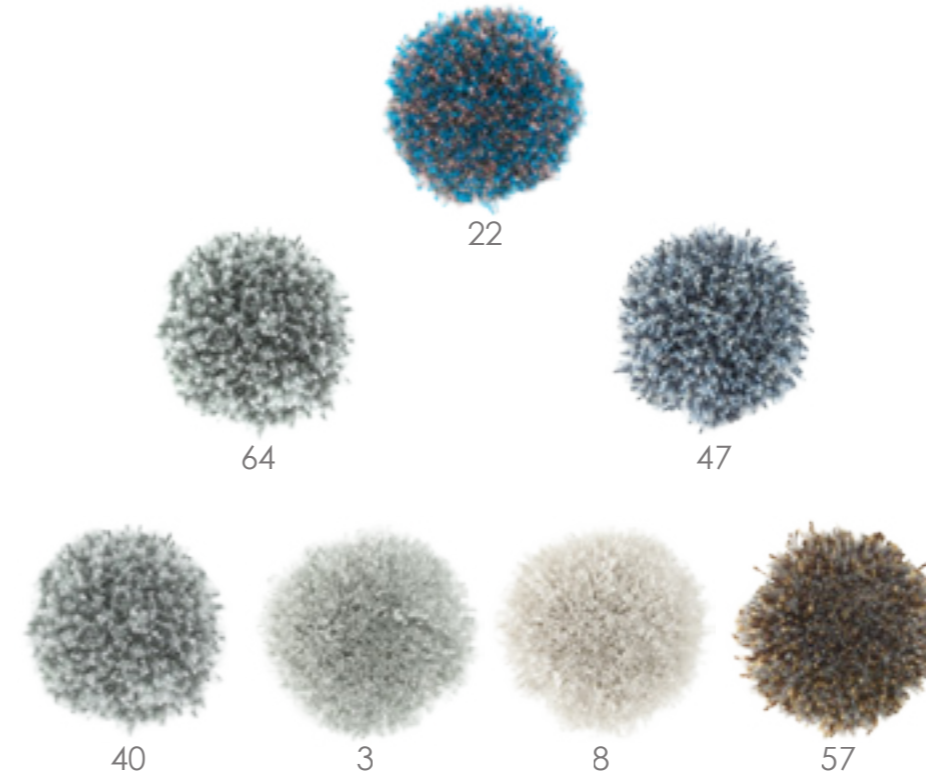
ca. 20 mm

width

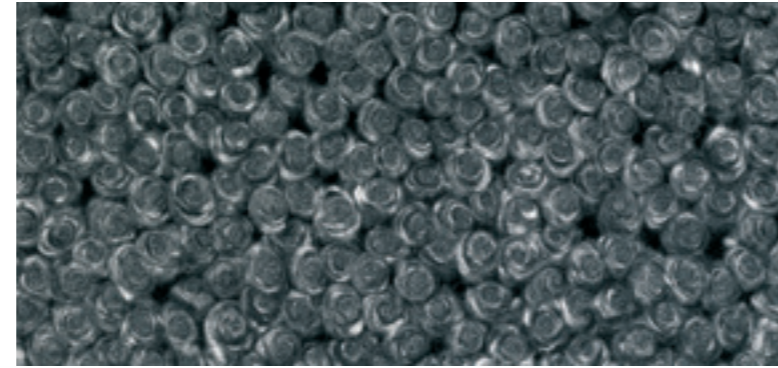
max. 5 m

use

please contact our sales office for advice



Logs



4008 marble

Take a walk on the wild side on our original and exclusive designer rug.

sizes

available as a finished rug and wall to wall carpet
max. size of hand knotted carpet without a seam: 5x10 m

pile composition
100% wool

width
max. 5 m

pile weight
ca. 6500 g/m²

use
please contact our sales office for advice

pile height
ca. 30mm

Mecca



Experience the warmth and softness of Mecca, made of 100% wool in 10 trendy colours.

sizes

available as a finished rug and wall to wall carpet
max. size of handtuft carpet without a seam: 5x10 m

pile composition
100 % wool

width
max. 5 m

pile weight
ca. 5000 g/m²

use
please contact our sales office for advice

pile height
ca. 30 mm

Medina



1223 ivoire

By mixing high pile wool with viscose, the magical surface of Medina was brought to life.

- sizes**
available as a finished rug and wall to wall carpet
max. size of handtuft carpet without a seam: 5x10 m
- pile composition**
70 % wool 30 % viscose
- pile weight**
ca. 5000 g/m²
- pile height**
ca. 30mm
- width**
max. 5 m
- use**
please contact our sales office for advice

Prince



Join our cotton club with Prince. Its 100% natural fibre, a gift from nature, provides a smooth and shiny look.

sizes

available as a finished rug and wall to wall carpet
max. size of handtuft carpet without a seam: 5x10 m

pile composition

100 % cotton

pile weight

ca. 3500 g/m²

pile height

ca. 12 mm

width

max. 5 m

use

please contact our sales office for advice



Queen



Queen is a 14mm short pile subtle and warm New Zealand wool selection. The softness of the yarn, the brightness of the colors will provide you a long lasting pleasure. Queen wool has a natural elasticity and is also naturally resistant to dirt.

sizes

available as a finished rug and wall to wall carpet
max. size of handtuft carpet without a seam: 5x10 m

pile composition

100 % wool

pile weight

ca. 4000 g/m²

pile height

ca. 14 mm

width

max. 5 m

use

please contact our sales office for advice



Royal



Royal is a 10mm short pile subtle and warm New Zealand wool selection. The softness of the yarn, the brightness of the colors will provide you a long lasting pleasure. Royal wool has a natural elasticity and is also naturally resistant to dirt.

sizes

available as a finished rug and wall to wall carpet
max. size of handtuft carpet without a seam: 5x10 m

pile composition

100 % wool

pile weight

ca. 3500 g/m²

pile height

ca. 10 mm

width

max. 5 m

use

please contact our sales office for advice





Trinity Golden Brown

LY301-LY711-LY704-LY707

Trinity



Enjoy the magical visual effects of Trinity, made of 100% lyocell. Let it shine in your interior, experience the dynamic reflection of colors and yarn. Trinity is a unique carpet for unique homes.

sizes
available as a finished rug and wall to wall carpet
max. size of handtuft carpet without a seam: 5x10 m

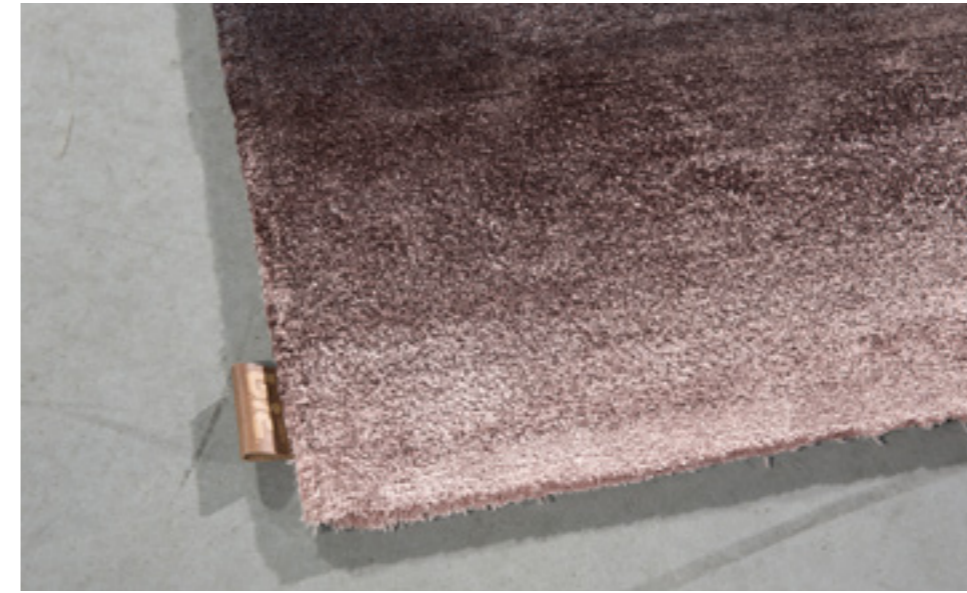
pile composition
100 % lyocell

pile weight
ca. 4000 g/m²

pile height
ca. 12 mm

width
max. 5 m

use
please contact our sales office for advice



Trinity Aquarel LY604-LY605-LY603-LY602

LYOCELL

Lyocell is made of a **sustainable nature based cellulose fiber**, in this case wood chips of the eucalyptus tree. The fibers have an exceptionally smooth and silky surface. It has *the cool feeling of linnen in summer and the pleasant warm feeling of wool in winter*. The fibers are very firm and extremely tear resistant, even when wet.

This makes lyocell a very durable material.

ENVIRONMENTAL FRIENDLY PRODUCTION

Lyocell is a so-called “man-made” cellulose fiber which means it is industrially produced from natural raw materials. **It's made from eucalyptus wood from sustainable forests and is biodegradable.** The production also uses less harmful solvents such as amine oxide and makes sure the least possible waste water ends up in the environment.



The Gradient Collection offers a wide variety



LY301-LY711-LY704-LY707

Trinity Frame



Trinity Black & White

LY609-LY503-LY310-LY311



Trinity Moondust LY301-LY711-LY704-LY707



Trinity Sphere LY100-LY505

Versa



Versa is a 30mm short pile subtle and warm New Zealand wool selection. The softness of the yarn, the brightness of the colors will provide you a long lasting pleasure. Versa wool has a natural elasticity and is also naturally resistant to dirt.

sizes

available as a finished rug and wall to wall carpet
max. size of handtuft carpet without a seam: 5x10 m

pile composition

100 % wool

pile weight

ca. 5000 g/m²

pile height

ca. 30 mm

width

max. 5 m

use

please contact our sales office for advice





*"You have the idea,
we make the carpet"*





*“Endless possibilities
Custom design”*

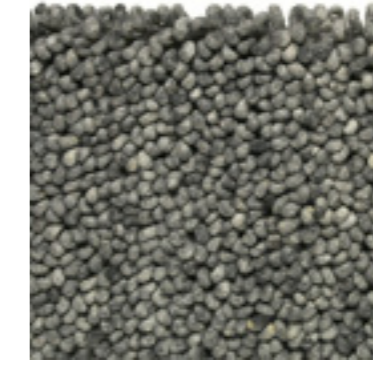




FINISHING



front edge



front edge



front edge



backing



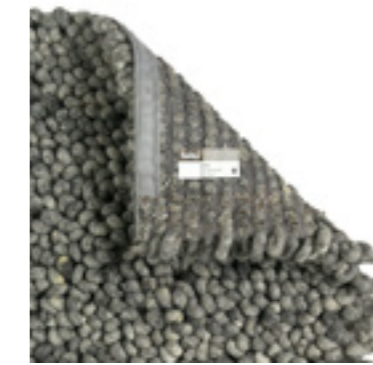
backing



backing
fixing together of 2 area rugs

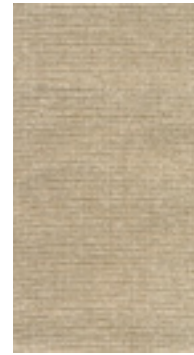


flap
small tape on 4 sides
for all qualities (except Stone)

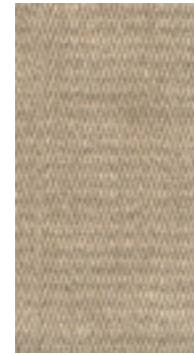


flap
on 2 sides turned down and glued
small tape on 2 sides
for Stone

Finishing



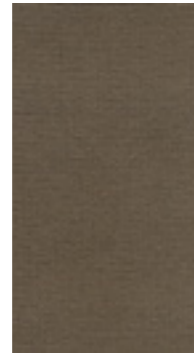
F - chenille C1928



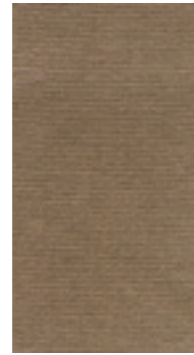
F - linen LS 010 naturel



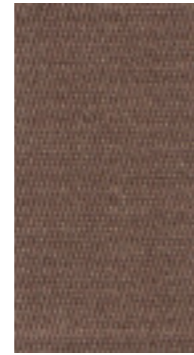
F - cotton K19 light khaki



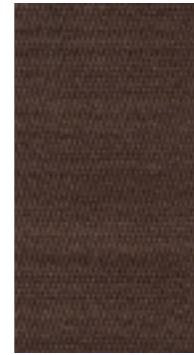
F - cotton K17 vison



F - chenille C7617



linen LS 670 espresso



F - linen LS 722 moca



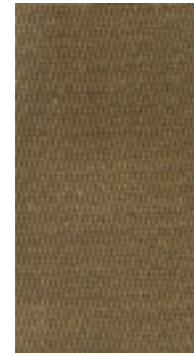
F - cotton K23 arabica



F - superstrong SU8013 brown



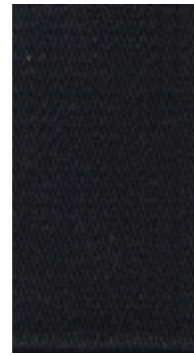
F - cotton K99 dark grey



F - linen LS 877 khaki



F - superstrong SU 5730 grey

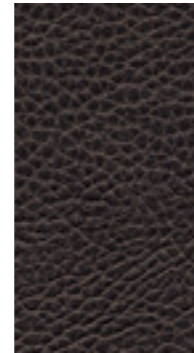


F - linen LS 776 black



F - cotton K25 black

S-SERIES



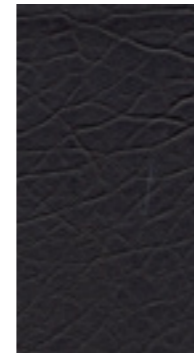
S - metallic 17325 flint



S - kavallerietuch 100 black



S - nappa 10305 ebene



S - safari 17366 santos black



credits

- 16 thanks to: Haelvoet NV Ingelmunster: Hidden
- 21 thanks to: Harmen Witte Interieurs
- 22 photography: Gerald Van Raffelghem
- 24-25 thanks to: Interieur labo Geraardsbergen - interior architect: Wim Van Oudenhove
- 26-27 interior architect: Friday Office
- 32 & 40 thanks to: Vandermeeren Interieur Veurne
- 42 thanks to: CBRE St.Martins Court London - photography: Morley von Sternberg
- 43 interior architect: Niels Majier
- 44 thanks to: Leolux Design Sint-Pieters-Leeuw
- 45 photography: Sigurd van Kranendonk
- 46 interior architect: D/Dock architects
- 48-49 architects office: studiomk27- photography: Nelson Kon
- 51 thanks to: RR Interieur Knokke
- 59 & 61 photography: Gerald Van Raffelghem
- 65 thanks to: De Kleine Prins BVBA
- 84 interior architect: D/Dock architects
- 87 (right side) interior architect: D/Dock architects
- 87 (left bottom) thanks to: 't Casteelken Interior Design
- 93 (left bottom) thanks to: Delmi Decor Kortrijk
- 102 (left side) interior architect: D/Dock architects
- Trinity dégradé handtuft: photography carpets by Gerald Van Raffelghem
- Layout & graphic design by Sophie Coucke

*Due to printing limitations, there may be slight colour deviations between the images shown in this catalogue and the actual carpet.
Please request our carpet samples for the most accurate results.*





BELGIAN INTERNATIONAL CARPET N.V./S.A
Vlamingstraat 12 | 8560 Wevelgem Belgium
T +32 56 23 54 10 | F +32 56 23 54 11 | sales@bic-carpets.be | www.bic-carpets.com

bic CARPETS

www.bic-carpets.com